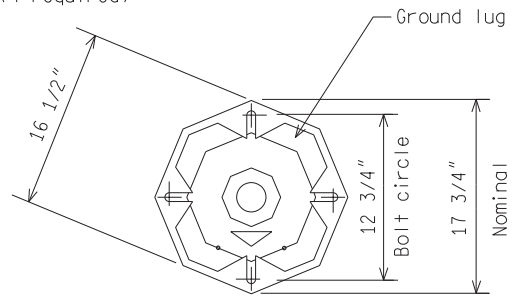
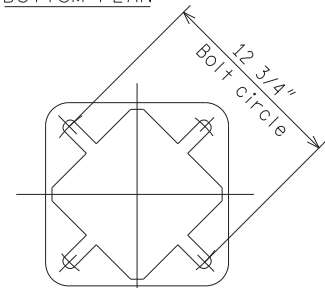


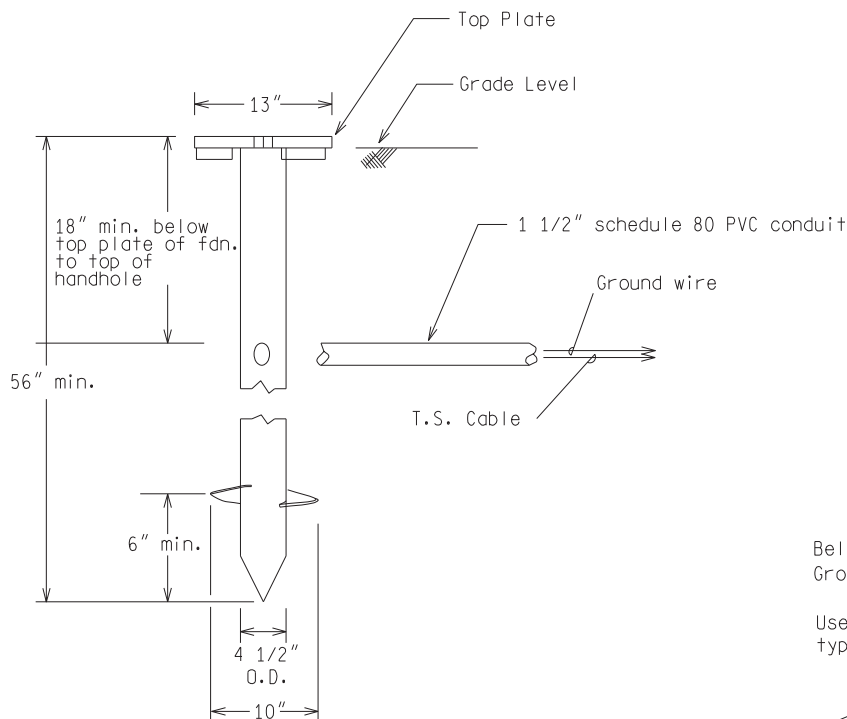
ISOMETRIC VIEW



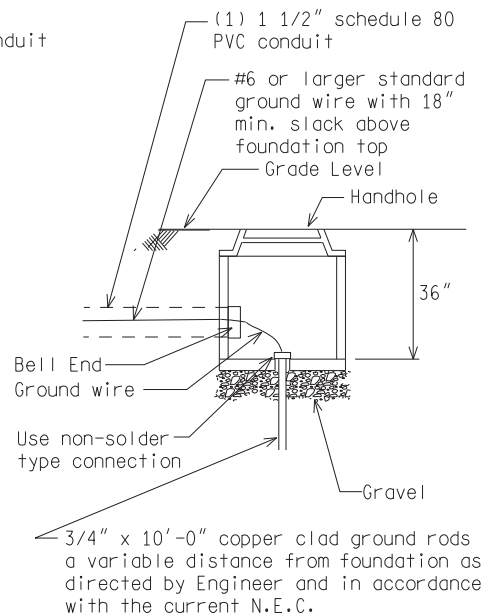
OCTAGONAL BASE
BOTTOM PLAN



SQUARE BASE
BOTTOM PLAN



HELIX FOUNDATION ANCHOR ASSEMBLY
FOR PEDESTRIAN PUSHBUTTON PEDESTAL ONLY
(REFER TO SIG-120-A)



HANDHOLE DETAIL

NOT TO SCALE

File: RefDoc/TR/Signals/Web/Sp Det/Fin/SIG072A.dgn Rev. 02/16/17



PREPARED BY
TRAFFIC AND SAFETY

DRAWN BY: JAM

CHECKED BY:

ENGINEER OF DELIVERY

ENGINEER OF DEVELOPMENT

(SPECIAL DETAIL)

FHWA APPROVAL DATE

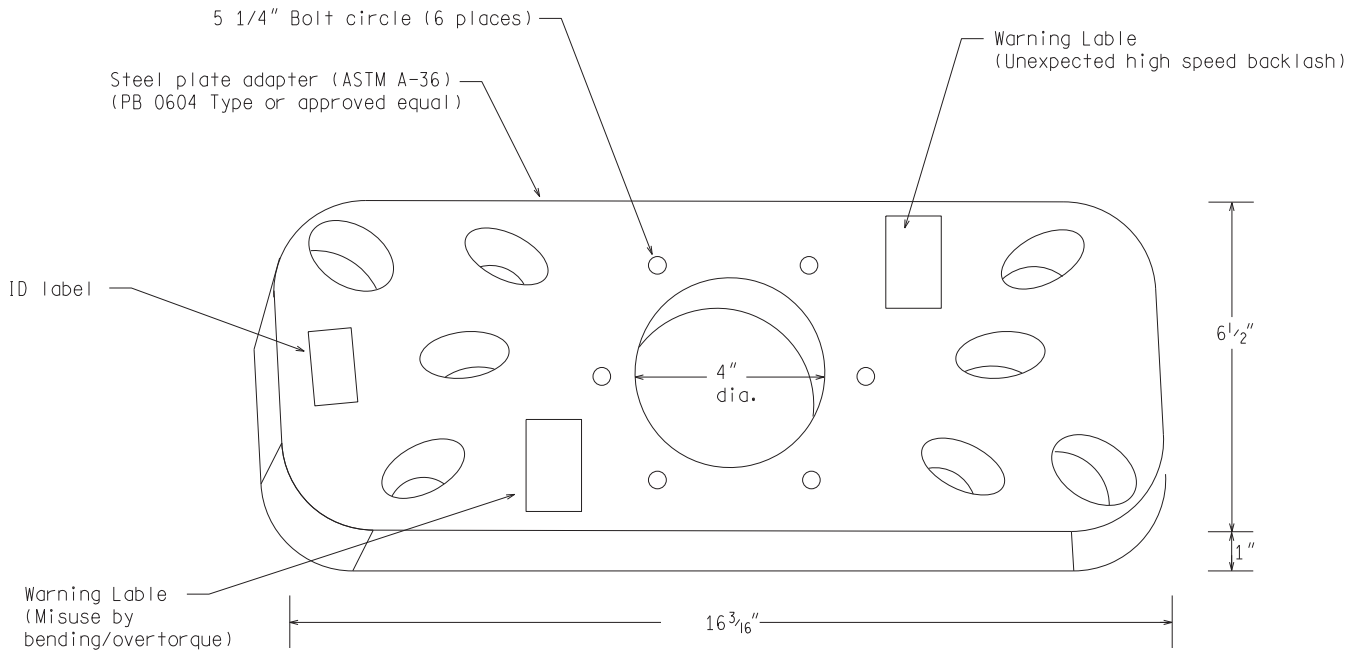
MICHIGAN DEPARTMENT OF TRANSPORTATION
BUREAU OF HIGHWAYS DELIVERY STANDARD PLAN FOR

HELIX PEDESTAL
FOUNDATION

SIG-072-A

PLAN DATE

SHEET
1 of 2



STEEL DRIVER ADAPTER
(FOR 4", 6", OR 8" SCREW IN FOUNDATION ANCHORS)

NOTE: Typically the driver adapter is attached between the Kelly Bar Adapter (hub) on the drill equipment and the top plate of the foundation anchor.

NOT TO SCALE

MICHIGAN DEPARTMENT OF TRANSPORTATION BUREAU OF HIGHWAYS DELIVERY STANDARD PLAN FOR	(SPECIAL DETAIL) FHWA APPROVAL DATE		SIG-072-A	SHEET 2 of 2
File: RefDoc/TR/Signals/Web/Sp Det/Fin/SIG072A.dgn	Rev. 02/16/17	PLAN DATE		